

EDIVOTE

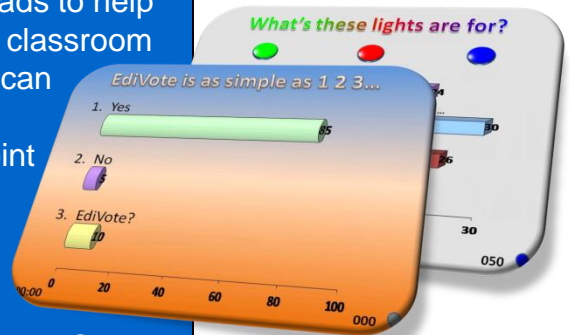
SIMPLE PRESENTATION POLLING

The key to Edivote™ is simplicity (as easy as 1, 2, 3)



Why pay a fortune for interactive polling software. Edivote™ demystifies Audience Response Systems with its straightforward 3 step approach. Edivote™ is by far the simplest way to add the power of real-time group polling to your PowerPoint Presentations. Getting feedback from meeting participants has never been easier. Edivote™ is a true PowerPoint add-in that lets you take full advantage of every capability PowerPoint has to offer and harnesses the power of Reply® group wireless response keypads to help you receive real-time feedback from meeting or classroom participants. This dynamic combination of tools can improve participation, focus, learning and decision making as it makes your PowerPoint presentations truly interactive experiences!

INVIGORATE YOUR PRESENTATION
ENHANCE YOUR AUDIENCES EXPERIENCE
MAKE POWERPOINT® INTERACTIVE WITH EDIVOTE™



Overview

- Edivote™ is a Microsoft® PowerPoint® Add-In.
- Edivote™ uses only Microsoft® resources.
- No database.
- No Session storing.
- Easy Reports using Microsoft® Excel®.
- Compatible with Office 2003 and 2007.
- Easy Setup.
- Improved Ease of use.
- Works with all the latest Reply Key pads.



©2009 Infowhyse GmbH. All rights reserved.

Bahnhofsallee 5 - 61231 Bad Nauheim / Germany TEL: +49 6032 9259280 FAX: +49 6032 92592829 – E-MAIL: info@infowhyse.com

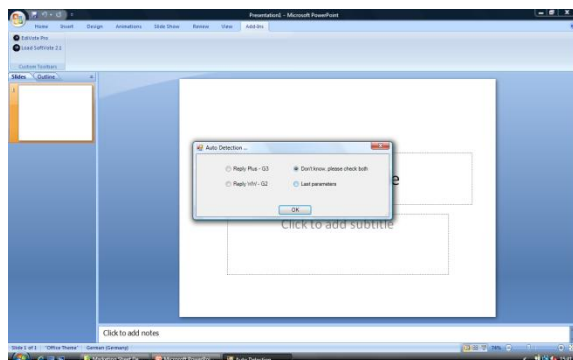
Audience Response Systems, Electronic Voting Systems, Group Response Systems, Interactive Response Systems
Audience Participation Systems, Wireless Voting Systems, Corporate Learning Systems.

www.infowhyse.com



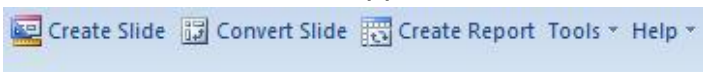
Step 1: Connect Base

First open Microsoft PowerPoint® and go to Add-Ins where you can choose EdiVote™. Click on the EdiVote™ icon and Edivote™ will automatically start the hardware assistant for the easy one click hardware configuration.

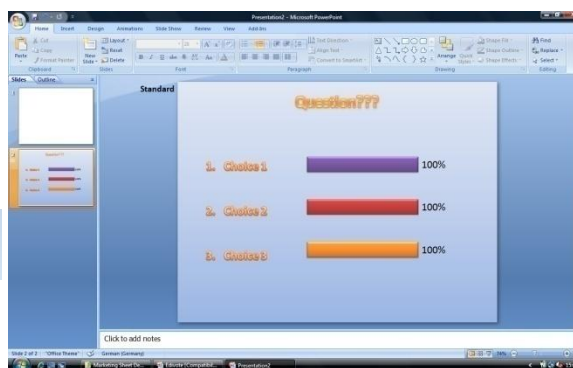


Step 2: Insert Question

After EdiVote™ has connected the base station the no nonsense and intuitive EdiVote™ toolbar will appear.

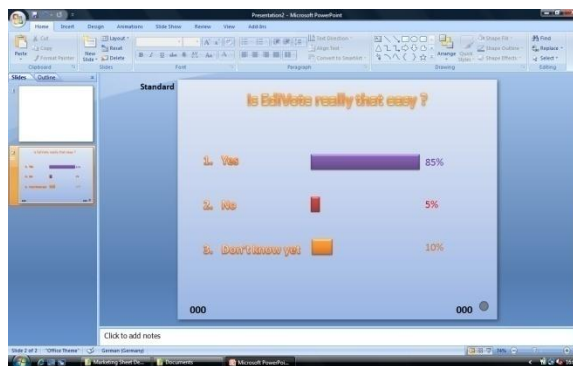


Now you are able to quickly create new slides or convert normal PowerPoint® Slides into EdiVote™ polling slides.



Step 3: Vote & Receive Result

Run your EdiVote™ application like a normal PowerPoint® presentation. Use your standard PowerPoint® navigation keys (Spacebar, right arrow) to Start/Stop a Polling. The status indicator visually indicates whether the vote is open/closed. Once the poll is closed, EdiVote™ displays the result immediately.



After the polling session has been completed and you close your Presentation, EdiVote™ prompts you to create a report, which is generated in Microsoft Excel®

